

# Sigma Installation Guide

## Checklist

To download and install Sigma, you must first install the Desktop Software onto your RIM Wireless Handheld. This software is included with your device. If you don't have this software or have trouble installing this software, contact RIM at 877-255-2377.

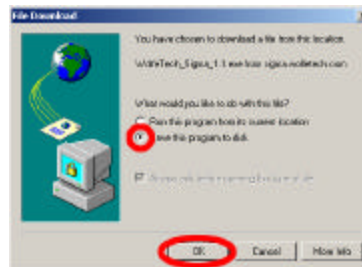
Before you install Sigma, make sure that you have the following.

- A computer running Windows 95, 98, NT, or 2000, with Internet access
- A RIM Wireless Handheld
- A RIM Wireless Handheld cradle
- RIM BlackBerry Desktop Manager 3.5 or higher

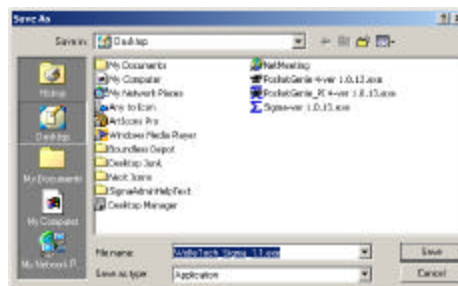
## Downloading

Okay--got all your stuff? Got the Desktop Software installed? Make sure your computer is off then do the following.

1. Connect one end of the cradle cable to an available COM port on the back of your computer.
2. Place the RIM Wireless Handheld into the cradle, making sure that the connector port on the bottom of the device connects with the connector prongs on the cradle. Press firmly into place.
3. Next, turn on your computer.
4. Download PocketGenie/PI at [http://sigma.wolfetech.com/release/WolfeTech\\_Sigma\\_1.1.exe](http://sigma.wolfetech.com/release/WolfeTech_Sigma_1.1.exe)
5. Select "Save program to disk" when prompted.



6. Select Desktop as your download directory.



## Installing – Step One

Now that you've downloaded Sigma, the first step is to install it on your desktop computer. **If you already have a version of Sigma installed on your computer, you must first delete it (from "Add/Remove Programs" in the Control Panel) before installing another version.**

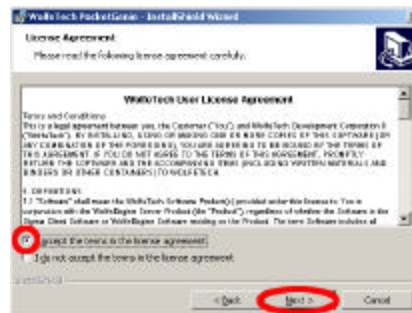
1. Go to your Desktop (or wherever you downloaded Sigma), and double click on the installer icon.



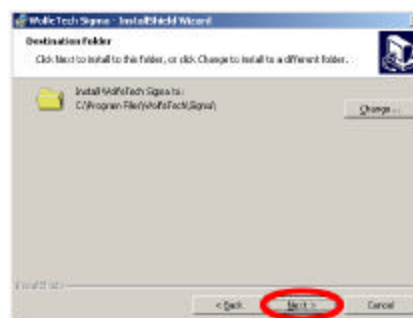
2. The Sigma installer will open. Click "Next".



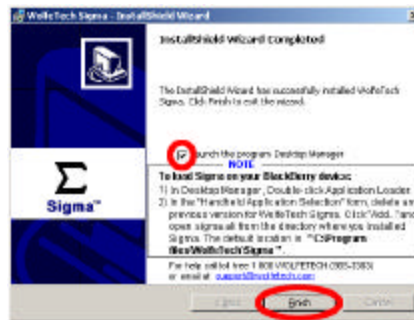
3. First, you will be presented with the WolfeTech User License Agreement. To continue installing the software, once you have read the agreement, select "I Agree" and click "Next".



4. The installer is now ready to load the software. The default directory is **C:\\Program Files\\WolfeTech\\Sigma**. (You may change this if you like, but remember where you save the files.) When the files have installed, select "Next".



5. Sigma is now installed on your desktop computer. The next step is to install it on your device. Check the box next to “Launch the program Desktop Manager” and click “Finish”.



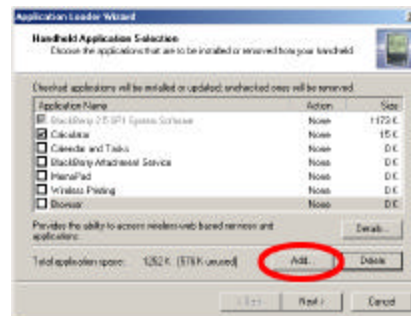
## Installing – Step Two

Now that you’ve installed Sigma on your desktop computer, it’s time to get it up and running on your device. **Before installing any new software, however, always remember to backup your device.**

1. In the Desktop Manager, double click on “Application Loader”, and then click “Next” when prompted.



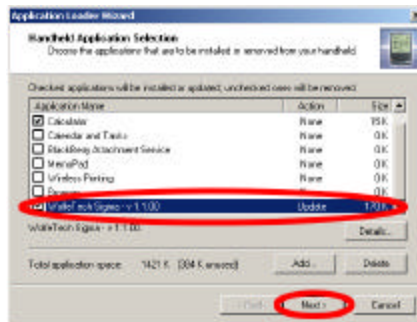
2. Once you’re in the optional application screen, select the “Add” button.



- Point the RIM – Application Loader Information Selection to where you saved the **“Sigma.ali”** file (The default is “C:\Program Files\WolfeTech\Sigma”).
- Select Sigma.ali



- Sigma should now be on the list of optional applications. Click “Next” to continue.



- The final screen confirms that the correct version of Sigma is being loaded. If this screen lists Sigma, click “Finish”.



If your company has a corporate agreement, you will be able to use Sigma right away. If not, you will be prompted to register the product first.

If you have any problems with this process, call WolfeTech's Client Support at 800-WOLFETECH (800-965-3383), available Monday through Friday, 6 a.m. to 6 p.m. PST.